

# You've Got a Friend

Carol King  
Arr.: Clemens Huber

## Intro

Musical notation for the Intro section, starting at measure 1. The key signature is one sharp (F#) and the time signature is 4/4. The notation includes a treble clef, a key signature of one sharp, and a 4/4 time signature. The melody is written on a single staff. Chords are indicated above the staff: G, C/G, G, F#m7, and H7. Fingerings are indicated by numbers 1-4. A '3' is written below the first measure, and an '8' is written below the staff in the first measure.

## Strophe

Musical notation for the first line of the Strophe section, starting at measure 5. The key signature is one sharp (F#) and the time signature is 4/4. The notation includes a treble clef, a key signature of one sharp, and a 4/4 time signature. The melody is written on a single staff. Chords are indicated above the staff: Em, H7/F#, Em, H7/F#, Em, H7/F#, Em. Fingerings are indicated by numbers 1-4. An '8' is written below the staff in the first measure.

Musical notation for the second line of the Strophe section, starting at measure 9. The key signature is one sharp (F#) and the time signature is 4/4. The notation includes a treble clef, a key signature of one sharp, and a 4/4 time signature. The melody is written on a single staff. Chords are indicated above the staff: Am7, D7 III, G, G. Fingerings are indicated by numbers 1-4. An '8' is written below the staff in the first measure.

Musical notation for the third line of the Strophe section, starting at measure 13. The key signature is one sharp (F#) and the time signature is 4/4. The notation includes a treble clef, a key signature of one sharp, and a 4/4 time signature. The melody is written on a single staff. Chords are indicated above the staff: F#m7, H7, Em, H7, Em, H7/F#, Em. Fingerings are indicated by numbers 1-4. An '8' is written below the staff in the first measure.

Musical notation for the fourth line of the Strophe section, starting at measure 17. The key signature is one sharp (F#) and the time signature is 4/4. The notation includes a treble clef, a key signature of one sharp, and a 4/4 time signature. The melody is written on a single staff. Chords are indicated above the staff: Am7, Hm7, C/D, D7. Fingerings are indicated by numbers 1-4. An '8' is written below the staff in the first measure.

## Refrain

Musical notation for the Refrain section, starting at measure 21. The key signature is one sharp (F#) and the time signature is 4/4. The notation includes a treble clef, a key signature of one sharp, and a 4/4 time signature. The melody is written on a single staff. Chords are indicated above the staff: G, C. Fingerings are indicated by numbers 1-4. An '8' is written below the staff in the first measure.

25 G Am7 D7

29 G Gmaj7 Cmaj7 Em G7

33 C Hm7 C/D Bridge Fmaj7 C

37 G Gmaj7 Cmaj7 F7

41 Em A7 C/D D7

Refrain bis ♪-♪

45 G C/G G C/G

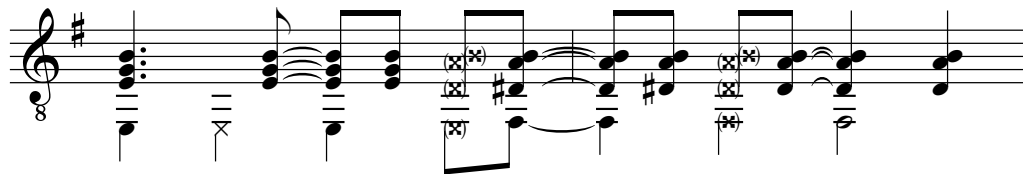
49 G C/G rit. G

## Varianten

ein Wort zum Groove

Den hier verwendeten Groove sehe ich - wie schon öfter erwähnt - als eine Möglichkeit, die der Stilistik des Originals möglichst nahe kommt. Im Idealfall (vor allem bei gleichzeitigem Singen und Begleiten) wird ein guter Spieler mit der Stimme/dem Text "mitphrasieren", d. h. der Rhythmus wird aufgebrochen und verschoben. Das kann instinktiv geschehen. Hier ein Beispiel, wie man es auch machen könnte - eine 2-taktige Phrasierung im Bossa Nova Stil.

Takt 5



Das charakteristische Motiv der Einleitung lässt sich auch zweistimmig in Sexten spielen.

Takt 1

